

SOUTHEAST REGION: Get EVAL Certified!

Moderator:

Julie Bond

Best Workplaces for Commuters

Guest Speaker:

Torin Spencer

Electrification Coalition



March 7, 2024

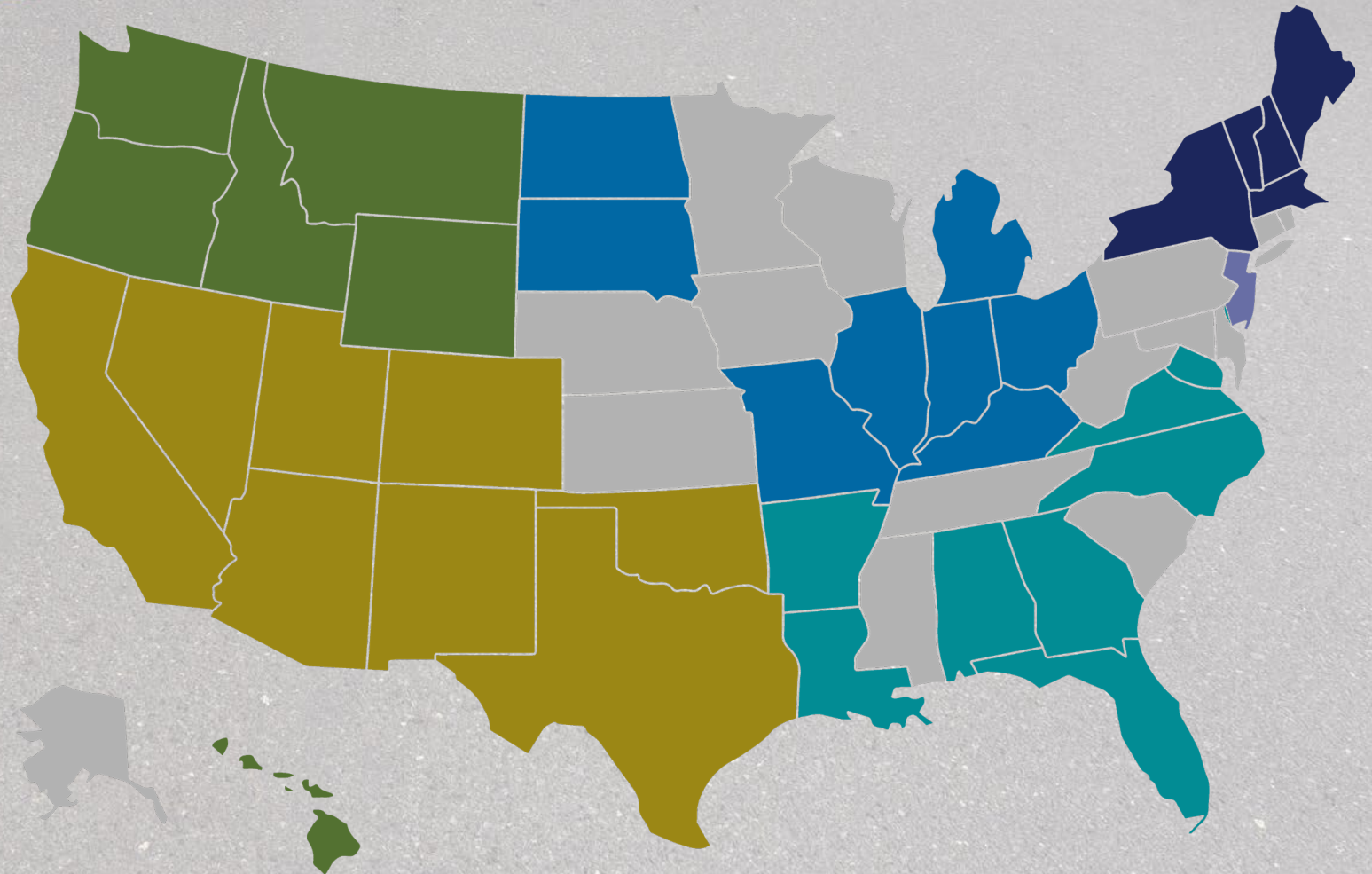
EVAL



Electric
Vehicle
Adoption
Leadership

EVAL Regions:

-  Southwest
-  Midwest
-  Northwest
-  Northeast
-  Southeast
-  New Jersey



Welcome!

TODAY'S AGENDA:

Introductions

Get to know your hosts:

- Julie Bond, Best Workplaces for Commuters
- Torin Spencer, Electrification Coalition

What is EVAL?

- How can the EVAL program benefit you?

Questions?



About Best Workplaces for Commuters

44
Sites



67
Universities/Colleges



651
Workplaces



At a Glance

762

total BWCs in the U.S. & Canada

1.7 MILLION
commuters impacted



About our Guest Speaker



Torin Spencer

Senior Associate
Electrification Coalition



Electrification
Coalition

About the Electrification Coalition

The **Electrification Coalition** is a nonpartisan, nonprofit organization that develops and implements a broad set of strategies to facilitate the widespread adoption of electric vehicles to overcome the economic, public health, and national security challenges that stem from America's dependence on oil.





Southeast Region: Get EVAL Certified!

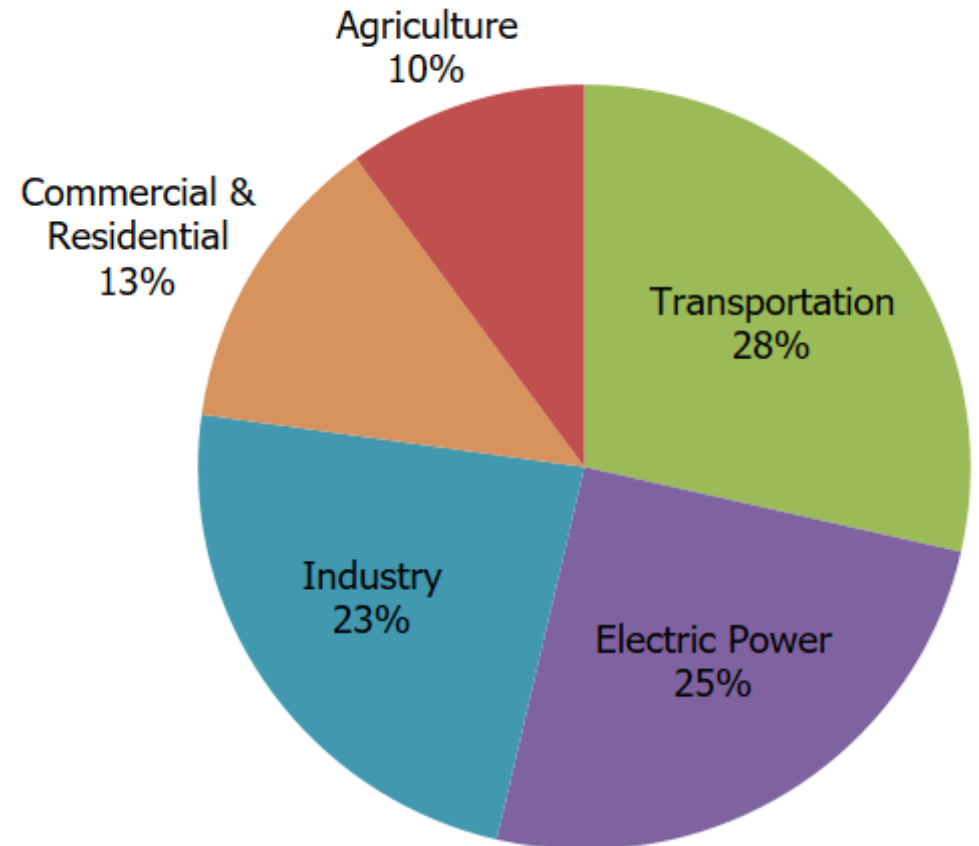
BECOME A LEADER IN WORKPLACE CHARGING



Electrification
Coalition

Transportation is the Largest Source of Greenhouse Gases

Transportation is the only sector with *rising* emissions.

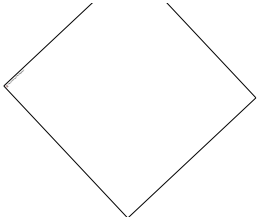


Source: *Inventory of U.S. Greenhouse Gas Emissions and Sinks: 1990–2021*

Becoming a **Leader** in Electric Mobility is Great for Employers



Reduces emissions by 30% - 90%



Charging at Work Improves Retention

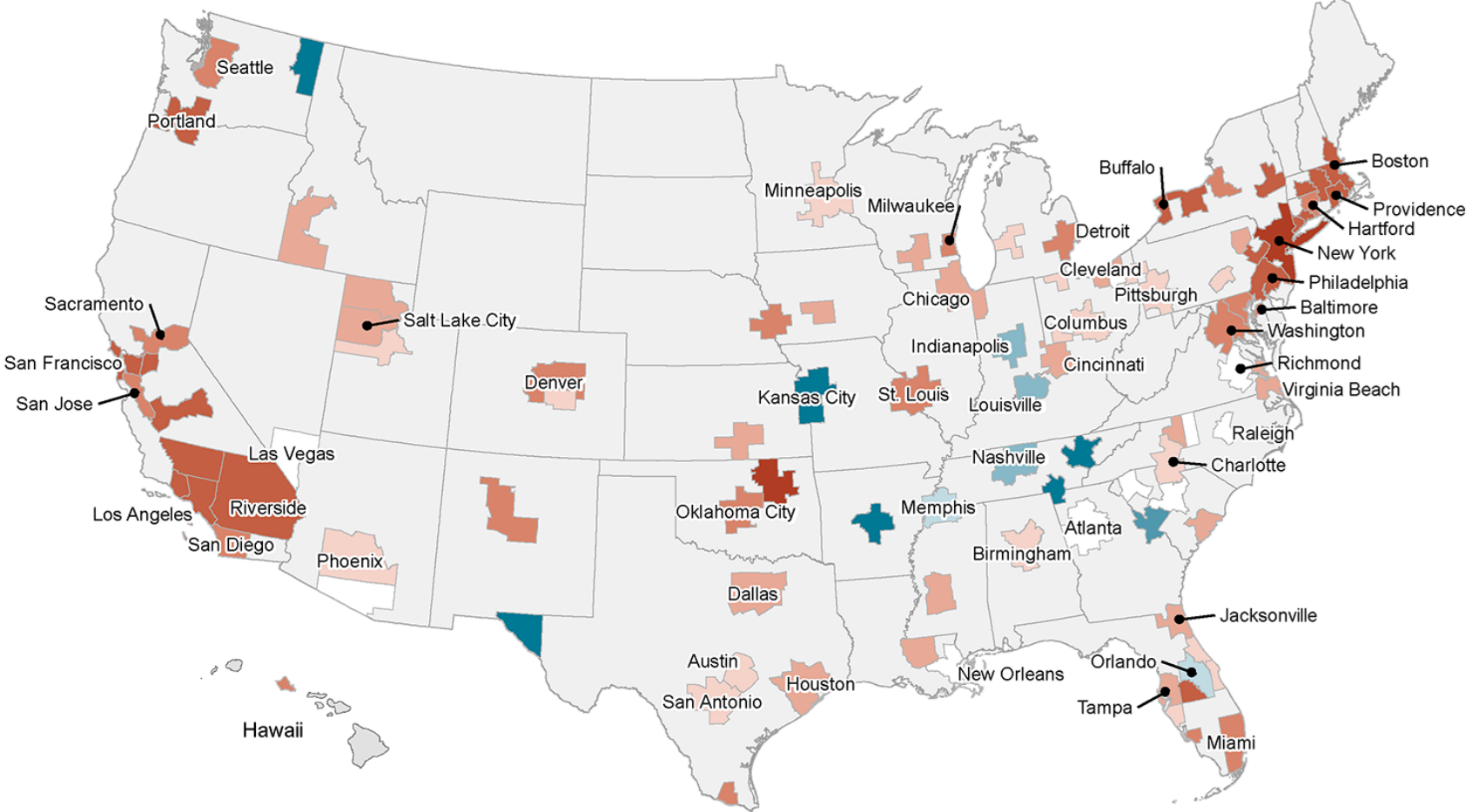


Sustainability Improves Hiring

99¢

You help employees save thousands

Charging Infrastructure Has Huge Gaps Today

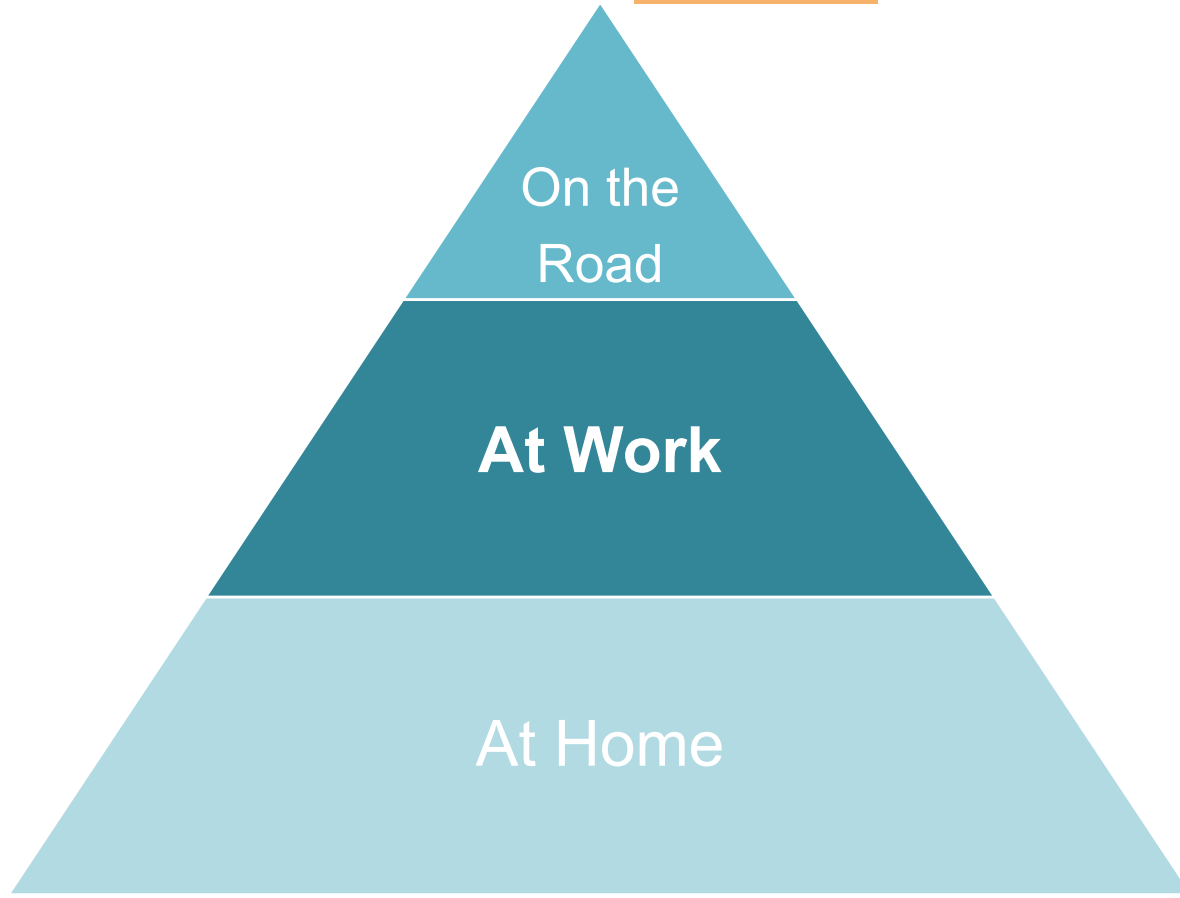


Charging infrastructure in 2017 as a percentage of that needed by 2025



Besides Home, Charging at Work is the Preferred Option

WORKPLACES ARE THE SECOND MOST LIKELY LOCATION FOR EV OWNERS TO CHARGE



20% of Americans, and an even higher percentage of low-and moderate-income drivers, live in buildings that do not have access to off-street parking to charge an EV

Why Install Workplace Charging?

Benefits to Employees and Employers

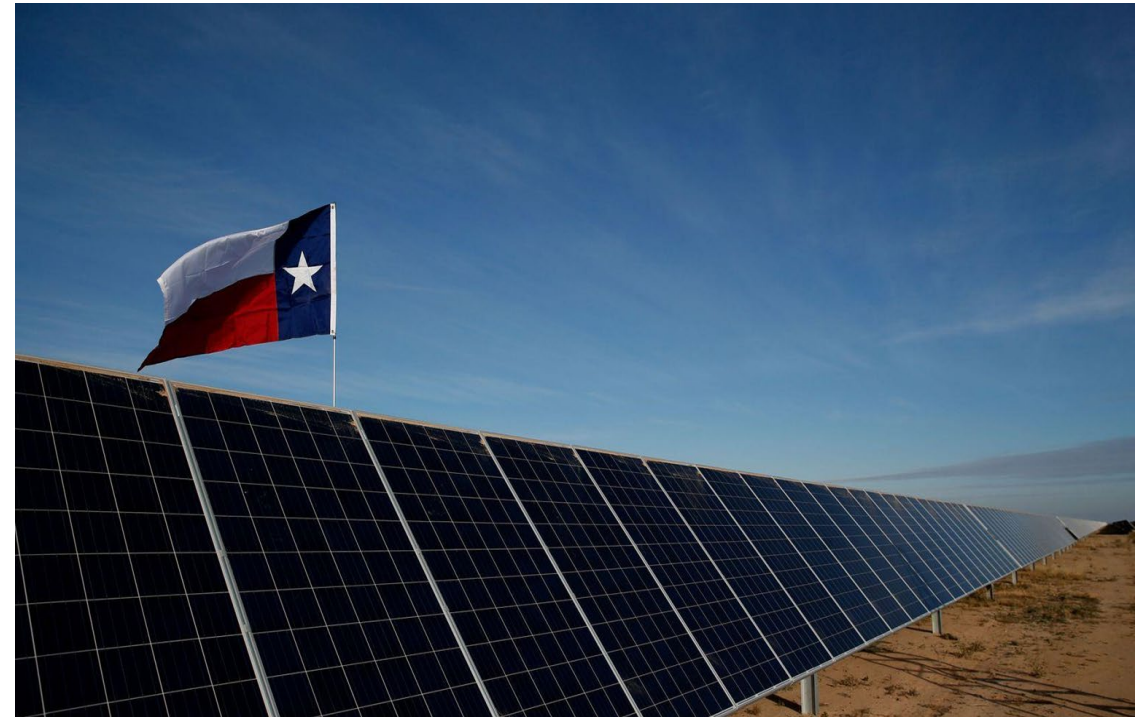
- Increase access to EV charging for employees
- Range confidence for employees
- Improve employee retention and recruitment
- Align and enhance company values



Workplace Charging is **Good** for the Environment

A recent study by Stanford researchers suggests that shifting current EV charging from home to work and night to day could:

- Cut costs
- Reduce greenhouse gas emissions
- Improve grid efficiency
- Match key charging times with peak solar generation time periods



Electric Vehicle Adoption Leadership



What is EVAL?

Electric Vehicle Adoption Leadership (EVAL) is a certification program that provides technical assistance and recognition to organizations that support the adoption of clean transportation.

EVAL certification indicates the availability of clean transportation options and opportunities for staff at a workplace.

What is EVAL?

EVAL certification **distinguishes** businesses for the sustainable actions they make.



15 - 39
points



40 - 54
points



55 - 69
points



70 - 100
points

EVAL Objectives

Our goal is to execute a nationwide workplace charging program comprised of education, outreach and technical assistance activities that enables a large-scale increase in workplace charging.



Collaborative Development Process



Electrification
Coalition



EVNO  **RE**

EVAL Eligibility

Employers from all industries and sizes, including state, local or Tribal government entities, community-based organizations and nonprofits, are eligible to apply.

Home offices and organizations providing charging for fleet vehicles *exclusively* are *not* eligible to apply.

Easy Certification Process

1

Register your organization by completing key information

2

Apply for EVAL certification

3

Access digital resources and templates

4

Connect with Forth or community members for additional support

5

Submit your application

6

Receive your certification and get recognized!

Certification Includes:

Employee
Engagement

Understanding employee e-mobility needs

Planning &
Evaluation

Initiating planning and evaluation for the workplace charging program

Mobility
Incentives

Incentivizing the adoption of e-mobility

EV Charging

Expanding access to EV charging stations

Innovation

Showcasing sustainability leadership through innovative and regional programs

Technical Assistance

- Webinars
- Template surveys and forms
- Directory of local providers and installers
- Employee education resources
- Program Implementation Guide
- Best practices



CHARGING 101

So, you're thinking about going electric. Great! The number of charging stations keeps increasing, making getting from point A to point B as easy as 1, 2, 3! Plus, charging is becoming more convenient and faster – you can charge at home, on your road trip, and even at work!

Charging Levels

Level 1	Level 2	DC Fast Charging
<ul style="list-style-type: none">• Plug into a 120-volt grounded outlet• Adds 2-5 miles of range per hour• Fully charge in 12+ hours• Great for short commutes under 50 miles or infrequent car use	<ul style="list-style-type: none">• Plug in through a 240-volt outlet• Adds roughly 25 miles of range per hour depending on vehicle• Fully charge in 8+ hours• Ideal for charging at home or work	<ul style="list-style-type: none">• Public sites only due to electrical constraints• Adds up to 250 miles of range per hour• Fully charge within 1 hour• Ideal for charging on long road trips with quick stops, or when short on time

Quick Facts

- There are over **900 public charging stations** & **2,200 charging ports** in Oregon
- Chargers range from simple plug-and-go to **smart chargers** that can be programmed to **start and stop when you choose**
- The **average commute** for Americans is **35 miles per day**

Public Charging Networks

When charging at a public station, you'll likely use a charger that's serviced by a network. Many have membership programs or subscriptions (you can download the app on your phone) and you can also pay as you go.

Membership with these networks usually includes a member discount or if you're not a member you can call the 24-hour customer service line to pay on the spot.

Rates vary by network – some charge by session, per energy unit, by the hour, and some are free.

ChargePoint, Electrify America, Blink Charging, Tesla, EVgo, Shell Recharge, and SemaConnect are the most common network providers in the U.S.

Finding Public stations

Resources and apps like PlugShare, Chargeway, or the Alternative Fuels Data Center give real-time information on charging station locations, pricing, nearby amenities, and availability. Google Maps also now shows charging station locations.

Charging stations can be anywhere – at grocery stores and shopping centers, rest stops on the highway, and even at your workplace. You can run errands and grab a meal while you're charging up, plus some charging stations can communicate with your car and phone so you control when charging occurs.

Recognition & Marketing

- Exclusive Roundtable Workgroup
- Spotlight on the EVAL website
- Forth Roadmap Conference
- Workplace spotlight (Platinum)
- Digital badge & signed certificate



How Much Does It Cost?

- The EVAL Certification application is waived until October 2024.
- After November 1, 2024, a fee will be implemented to certify each location.
- EVAL does not require recertification.

Auditing

- Systematic Sampling: every 100th application.
- Forth staff will reach out requesting supporting documentation.
- After review, your certification will be confirmed or rescinded if insufficient documentation is provided.



CHARGE@WORK

POWERING WORKPLACE CHARGING

Charge@Work provides tools, resources and technical assistance to make workplace charging a reality.

How?

- Connect with federal and local incentive programs
- Create a site plan
- Identify which technologies work best for organizations
- Gauge worker interest in EVs

Incentives

State/Utility

- State of FL Electric Vehicle (EV) Charging Station Financing Authorization
- State of GA Electric Vehicle (EV) Charging Station Tax Credit
- Commercial Electrification Rebates - Jacksonville Electric Authority (JEA)
- Commercial Electric Vehicle (EV) Charging Station Rebates - Duke Energy
- Commercial Electric Vehicle (EV) Charging Station Incentive – Florida Power & Light (FPL)

Federal

- National Electric Vehicle Infrastructure (NEVI) Discretionary Grant Program
- Alternative Fuel Vehicle Refueling Property Credit (30C)

Use the EC's **EV Funding Finder** to identify funding opportunities for your organization:

www.electrificationcoalition.org/ev-funding-finder

Join the Certified Sustainability Leaders



ATLAS
GENERAL CONTRACTORS



What's Next?

- Start the [EVAL Certification!](#)
- Sign the [Charge@Work Pledge!](#)
- Connect with us on [social media!](#)



Forth



Forth



@ForthMobility



forth.mobility

Questions?

Type your questions
into the **Q&A Box**



SOUTHEAST REGION: Get EVAL Certified!

Julie Bond

Best Workplaces for Commuters

jmbond@usf.edu

Torin Spencer

Electrification Coalition

tspencer@electrificationcoalition.org



Thank you!