

BEST

Workplaces
for Commuters™

2023

★ ★ ★ ★ ★ NOW SHOWING ★ ★ ★ ★ ★

OPENING DAY

Best Workplaces for Commuters

Thursday, June 1, 2023

3:00 PM – 4:00 PM ET

Starring

Maria C. Lashinger, GOROVE SLADE

Keynote Speaker



Today's Program



Introductions:

Julie Bond, BWC Program Manager

Speakers:

Marcus Moore, Fairfax County Commuter Services

Maria Lashinger, Gorove Slade

Opening Day!



Application period for 2024 designation is open!
June 1 through November 30, 2023

**National List Release – Employers/ Best Sites/
Universities & Colleges/ Partners**
Next release January 2024

Florida Members and Partners apply **anytime!**

BWC Membership



Best Workplaces

Employers



Best Sites

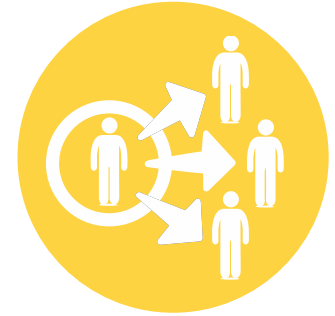
A Best Site is a designation for multi-employer developments

(commercial, retail/shopping mall, business campus)



Best Universities/Colleges

For Universities & colleges with commuter programs



Best Partners

A BWC Partner actively encourages & assists other employers, universities & sites to pursue membership

Recognition for
WORKPLACES, UNIVERSITIES and SITES

bestworkplaces.org

Thank you BWC Partner Organizations



ALTRANS (CA)
Arlington Transportation Partners (VA)
CATMA (VT)
Commute Connector (FL)
Commute.org (San Mateo County, CA)
Commuter Services (FL)
Commuter Services of Pennsylvania (PA)
Commutifi (CO)
DATA (VA)
Enterprise Holdings, Inc. (FL)
Fairfax County Government DOT (VA)
goDCgo (Washington DC)
GO ITHACA (NY)
Houston-Galveston Area Council (TX)
Loudoun County Commuter Services (VA)
Movability (TX)
NNTA (FL)

pointA (Canada)
reThink Your Commute (FL)
San Diego Association of Governments (CA)
San Luis Obispo Regional Rideshare (CA)
Stanford Research Park (CA)
South Florida Commuter Services (FL)
Tampa Bay Area Regional Transit Authority (FL)
Tampa Downtown Partnership (FL)
TriMet (OR)
Valley Metro/Commmute Solutions (AZ)
TDM Specialists (CA)
Triangle J Council of Governments (NC)
WeDriveU, Inc. (CA)
Wells + Associates (VA)
Westshore Alliance (FL)
Woodruff Company Engineered Solutions, Inc. (WCES) (VA)

Go to: <https://www.bestworkplaces.org/2023-BWC-List-Partners>

Recognition for
WORKPLACES, UNIVERSITIES and SITES

[bestworkplaces.org](https://www.bestworkplaces.org)



Kelly Bray
Associate Director - BWC



Amanda Nasturzio
Senior Program Manager



Jesse Han
Business Development Manager

pointA is proud to be Canada's first BWC partner!

pointA is a non-profit that envisions sustainable transportation options for everyone.

Established in 2001, we were the first Transportation Management Association in the province of Ontario.

Our goal is to connect people to the places they want to go. We aim to give people and businesses transportation options that benefit the environment, the economy and the well-being of our communities.

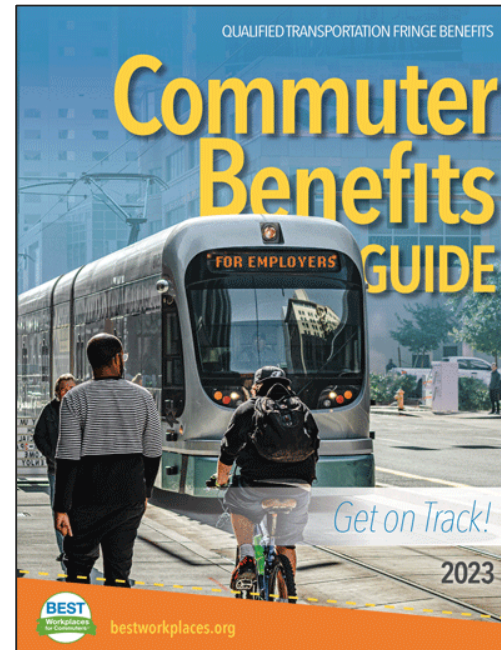
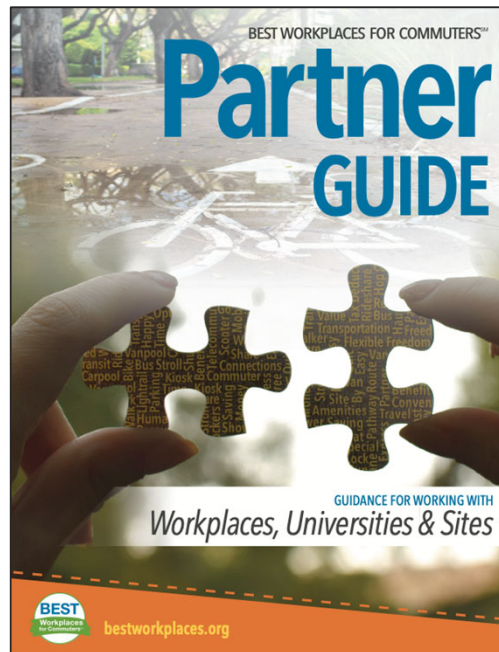
Now that opening day is here, we look forward to submitting the applications for Canada's first Best Workplace, Best Site, and Best University!



BWC Guides:



**Partner
Guide**
Support
your
recruitment
efforts



2023
**Commuter
Benefits
Guide for
Employers**

Recognition for
WORKPLACES, UNIVERSITIES and SITES

bestworkplaces.org

Presentations



Marcus Moore, TDM Liaison/Program Manager
Fairfax County Commuter Services

Maria Lashinger, Principal
Gorove Slade



Fairfax County Commuter Services

**Best Workplaces for Commuters Partner
2010-Present**

Marcus Moore

Fairfax County Department of
Transportation

Transportation Planner IV, TDM
Liaison

Part of the
Metropolitan
Washington DC
region,

Fairfax County is the
most populous
county in Virginia,
with over 1.14
million residents and
home to more than
36,000 employers.





BWC recognition supports the TDM outreach strategy for our team – allowing us to work with employers to enhance and celebrate their TDM programs.





**Best Workplaces,
Best Sites,
and Best Universities**

The county pays for the related membership fees for an employer for two years in recognition of their commitment to being a transportation partner in the county.

**Fairfax County
Commuter
Services identifies
and supports the
nomination of ten
to fifteen
organizations that
meet the Best
Workplaces for
Commuters
criteria each year.**



Fairfax County
Commuter
Services has been
a BWC Partner
since 2010,
recognizing
almost 150 Best
Workplaces for
Commuters
awardees.



Recognition is a large part of the work we do with BWC employers.

Each year, FCCS hosts the most recent BWC Awardees at an awards ceremony with the Fairfax County Board of Supervisors.

Your Ride. Your Way.
FAIRFAX COUNTY
COMMUTER SERVICES



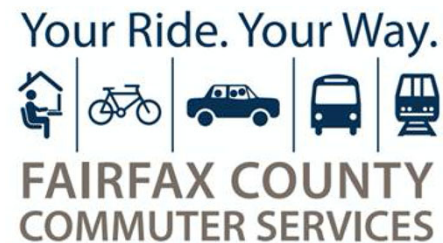
Congratulations to **Boston Properties (BXP)** for providing Reston Town Center with the tools to qualify it as a Best Workplace for Commuters! Bos ...see more



FCCS also celebrates our BWC awardees successes on social media platforms.

It is our pleasure to have the opportunity to honor these organizations for their commitment to supporting commuting options in our region.

Fairfax County is proud to be a long-standing BWC Partner - the BWC program enhances the TDM outreach work we do with employers, positively affecting our ability to reduce traffic congestion and preserve air quality in the region.



Marcus Moore

Fairfax County Department of Transportation

Transportation Planner IV, TDM Liaison

Marcus.Moore2@fairfaxcounty.gov

GOROVE SLADE

Transportation Planners and Engineers

Presentation for



GOROVE SLADE

Transportation Planners and Engineers

Founded in 1979

44 years in Metro DC Region

Specialized in Traffic Engineering
and Transportation Planning

Work for Public and Private Clients
and All Types of Land Use

Focus on the Movement of People



Gorove Slade Approach

Advocates for our clients and our communities

Support multimodalism and **sustainable design**

Forward-thinking mindset

First-hand knowledge of jurisdiction-specific requirements & processes

Strong working **relationships** with jurisdiction staff

Value project team **collaboration**

Produce **quality** deliverables

40+ years in
business

*5 offices in
Virginia, DC, &
Maryland*

50+
employees

Experience
on over 10,000
projects

Comprehensive Services

Multimodal Transportation Studies

Traffic Operations

Transportation Demand Management (TDM)

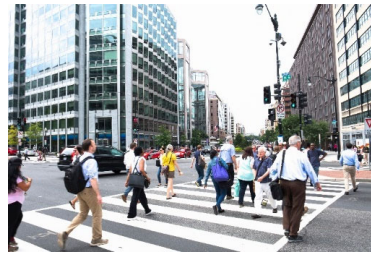
Site Access & Circulation Design

Traffic Signal Design

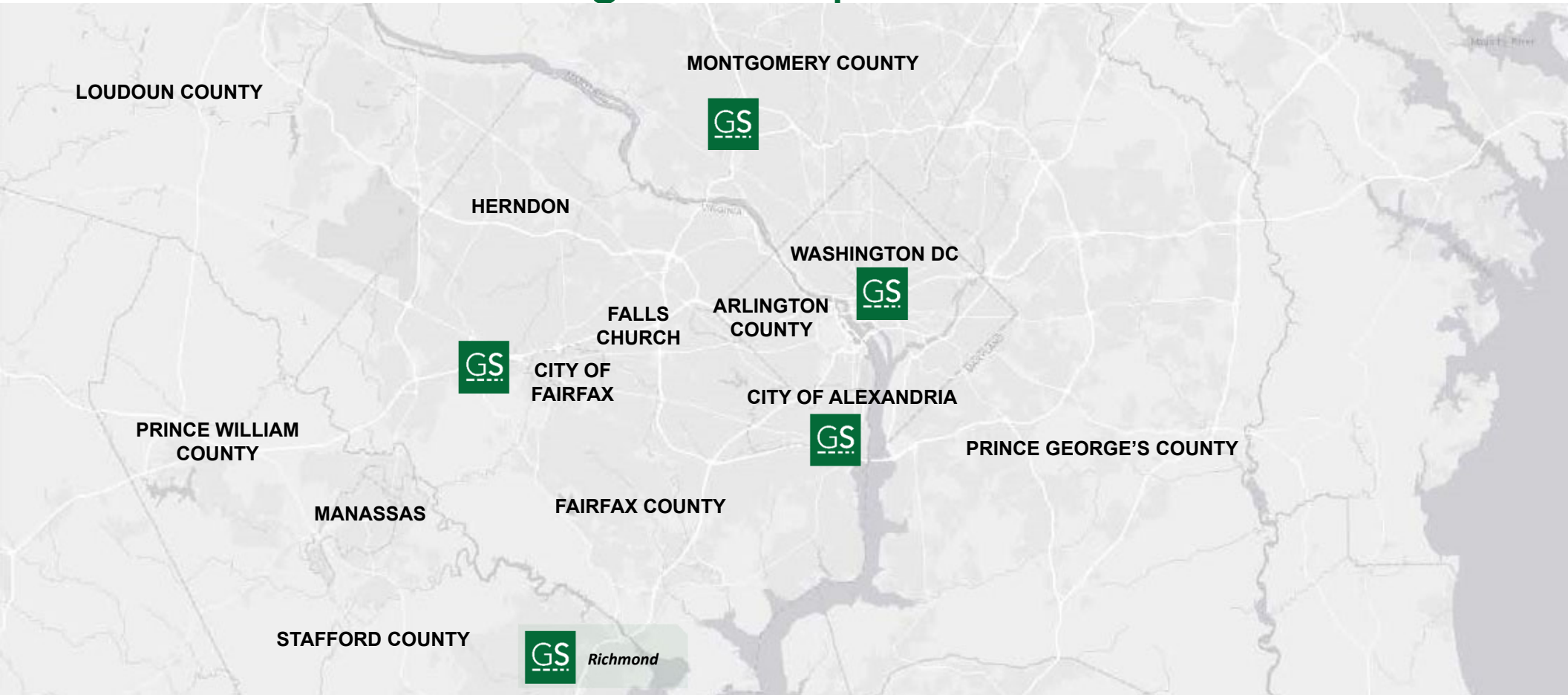
Campus Planning & Placemaking

Parking Studies & Design

Traffic Control Plans



Regional Experience



TDM *at* Gorove Slade

Transportation Management Association (TMA)
– We are a member of the Fairfax County TMA

Bicycle Benefits

- Secure bicycle storage
- On-site showers and lockers - makes it possible for people to walk or bicycle to or from work
- Bikeshare discounts – Capital Bikeshare memberships

Transit

- Offices are transit accessible
- Guaranteed Ride Home

Pre-Tax Commuter Benefit



Bike to Work Day 2023



TDM *at* Gorove Slade

goDCgo's Platinum Transportation Ambassadors

On-site amenities

- Convenient Store/Free Coffee Bar
- Food trucks during lunch hours

City Guide for New Hires

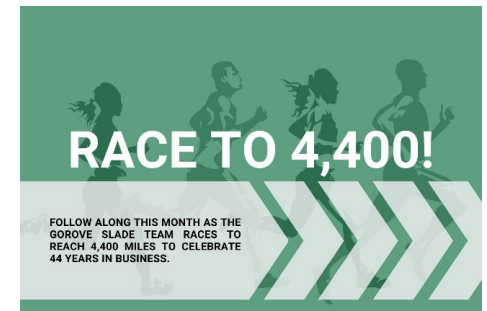
- How to get around
- Where to go

Healthy Initiatives

- May Mile Challenge

Sustainability

- Electric Vehicle charging in all garages

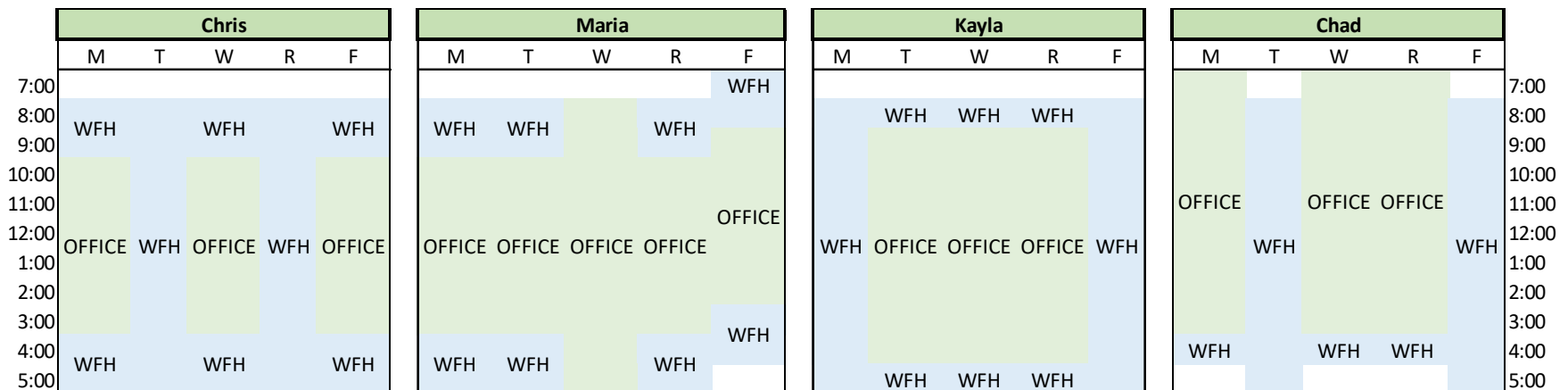
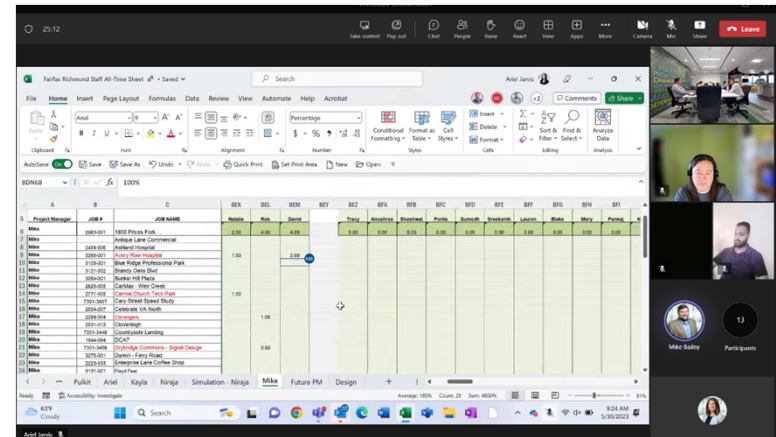


Free EV Charging at Gorove Slade HQ

TDM *at* Gorove Slade

Alternative Work Schedule

- Telework – ability to work from home up to 2 full days per week
- Flextime – core business hours with ability to work from home before and/or after every day



Why is BWC Important to Gorove Slade?

- Networking opportunities with peers and experts in the field to exchange ideas and learn new strategies
- National public recognition for being commuter-friendly and socially responsible
- Certificate to show our clients that we practice what we preach
- Online courses
- **Many of our clients are on the BWC list!**

“Best Workplaces for Commuters promotes environmentally-friendly commuting by encouraging multi-modal transportation and alternatives to reduce stress and traffic congestion.”

What Was The Application Process Like?

- Fairfax County staff lead the way!
- We have a partner in the process
- Easy to apply
- Enrolled employees in SmartBenefits Plu\$50 program
- Appreciate being acknowledged



TDM *by* Gorove Slade

TDM For Our Clients:

- Site Specific Plan Preparation
- Implementation
- Program Management
- Performance Monitoring

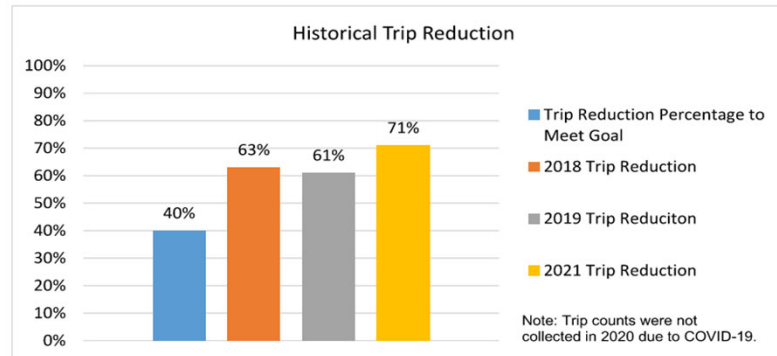
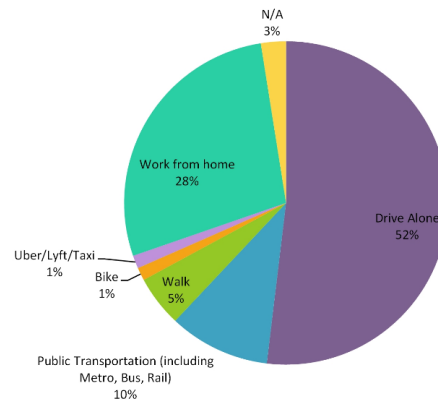
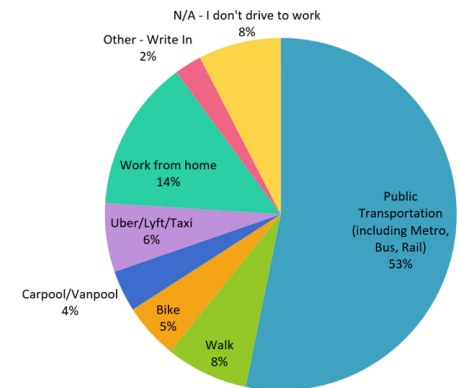


Figure 3: Historical Trip Reduction

Question 2: What is your typical mode of transportation to work?



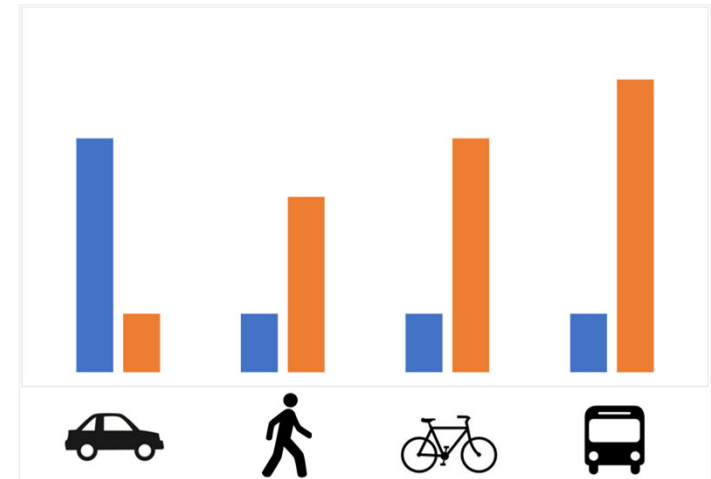
Question 3: If driving to work was not an option, what would be your second choice?



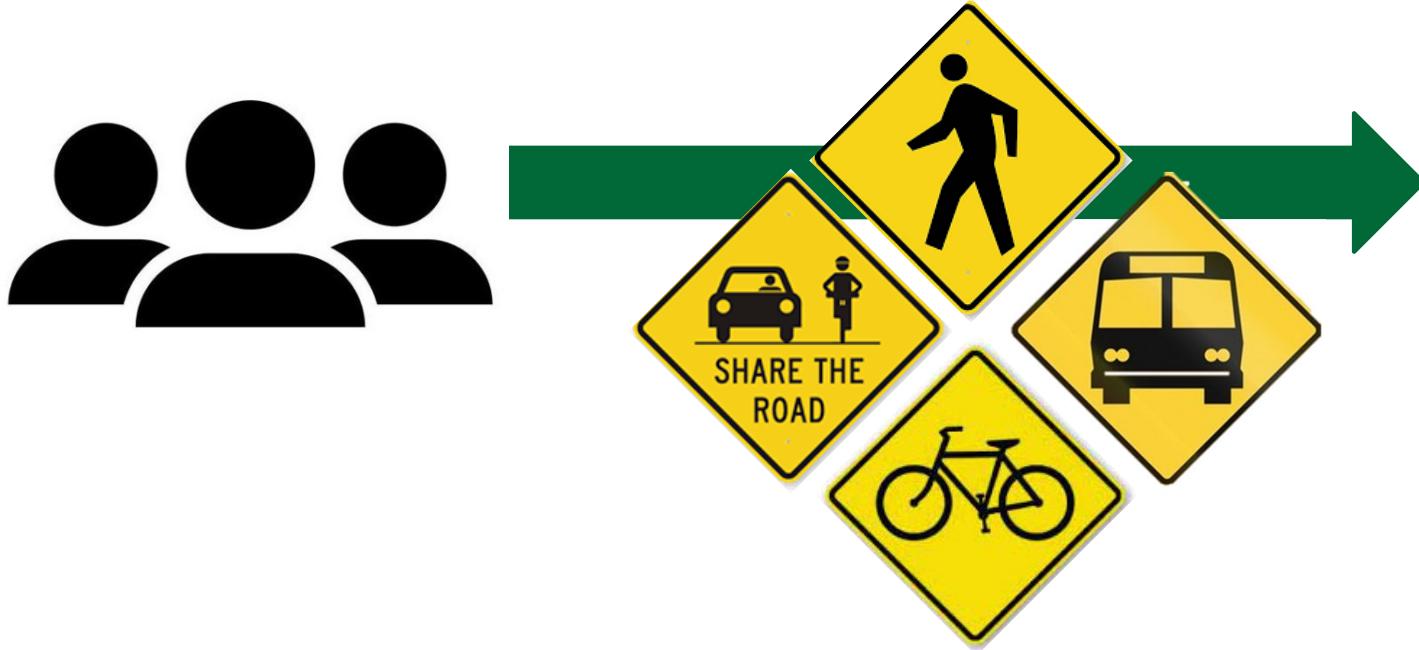
TDM *by* Gorove Slade

TDM for All

- Plan and design for all modes early in development process
- Liaise between local jurisdictions and industry groups and community groups
- Suburban to Urban Transformation

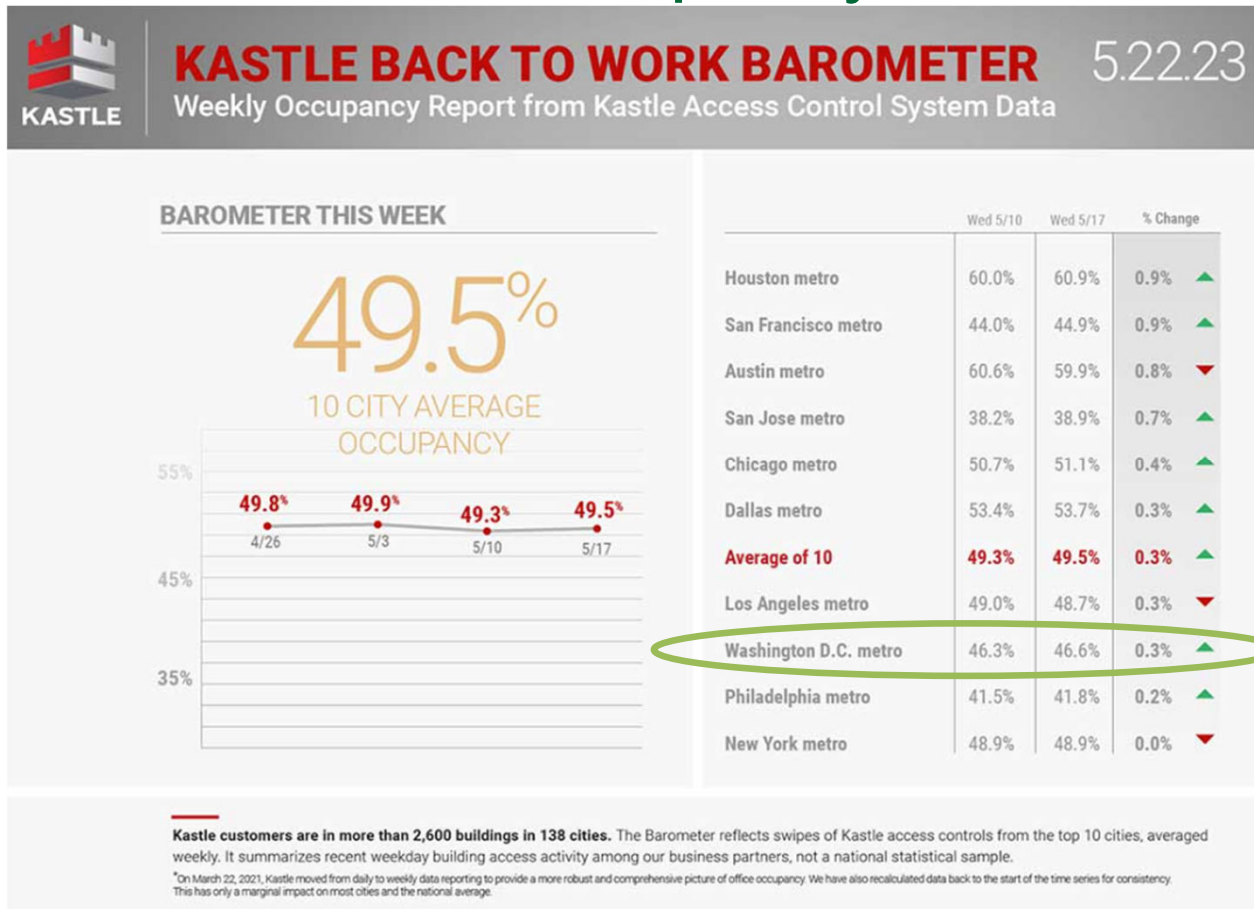


Return to Office



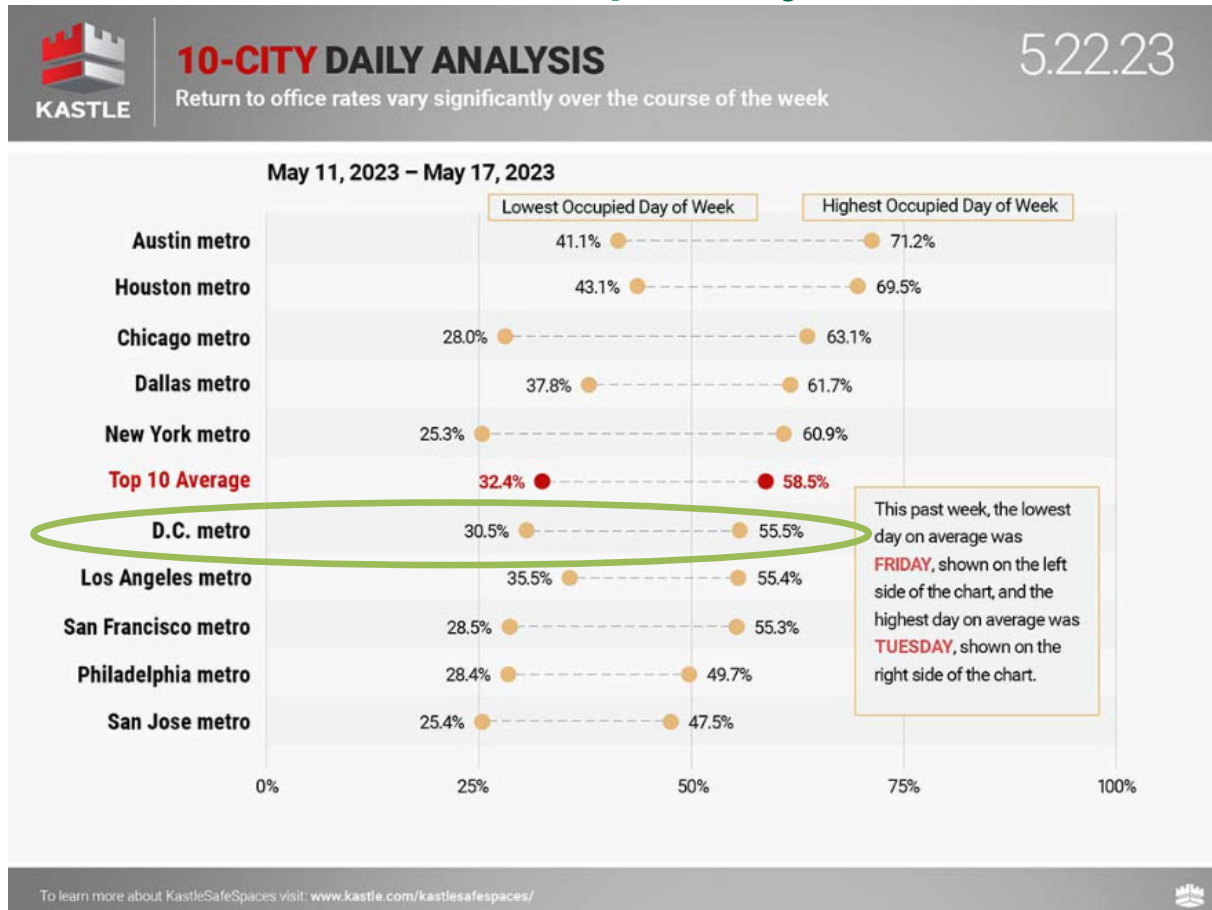
Gorove Slade Headquarters
Fairfax, VA

Office Occupancy Trend



Source: KASTLE Weekly Occupancy Report from Kastle Access Control Systems Data

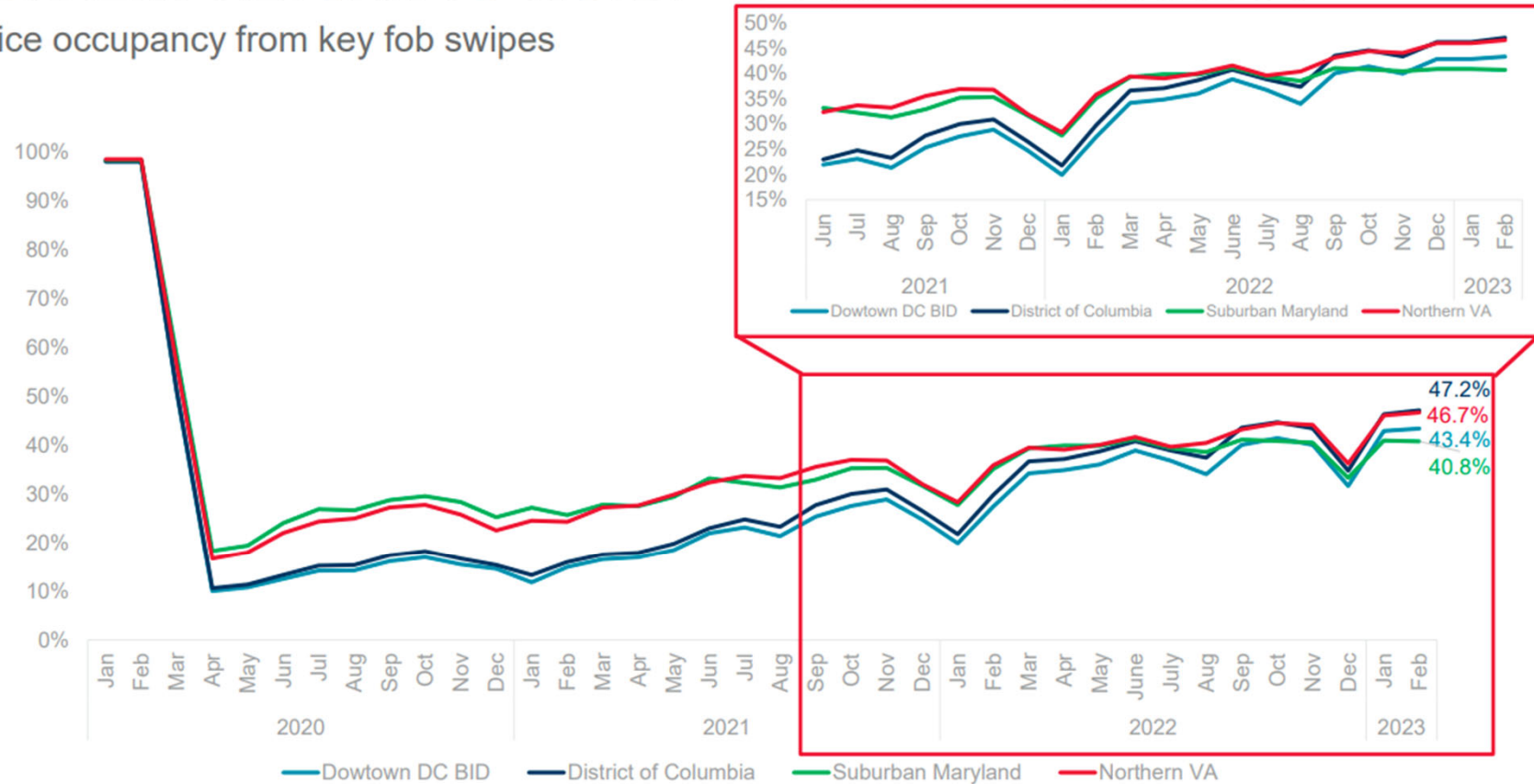
Office Occupancy Trend



Source: KASTLE Weekly Occupancy Report from Kastle Access Control Systems Data

CURRENT RETURN TO WORK - DC METRO BREAKOUT

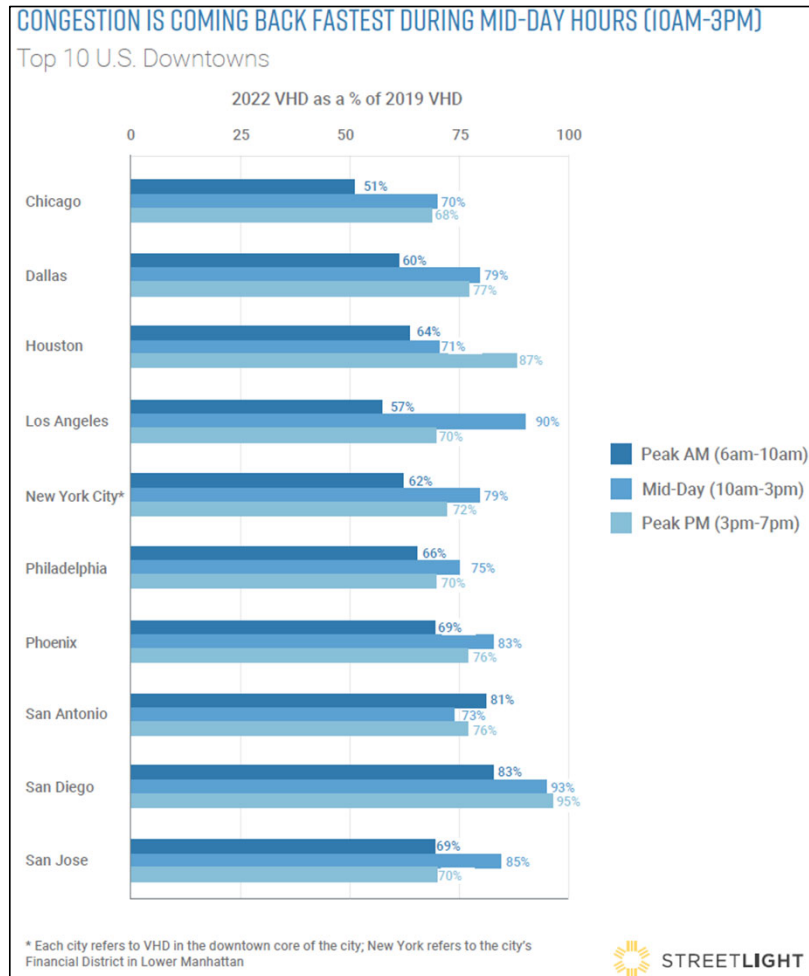
Office occupancy from key fob swipes



Source: Kastle Systems

Source: NAIOP DC | MD MARKET FORECAST PRESENTATION

Streetlight Data – Congestion Trends in Urban Areas



Downtown Congestion Post-COVID Traffic Trends in the Top 10 US Cities

- Vehicle Hours of Delay (VHD) approximately 40% lower than April 2019 during the morning peak hour, but only 22% lower during the non-peak hours.
- People who are coming back into the office seem to be doing so later in the day — and staying fewer hours than the historic nine-to-five.

Wrap Up

Return to Office Commuting Patterns

- New, slow return to the office
- Significant increase in Telework
- Significant drop in Transit Ridership
- Vehicular volumes reaching pre-pandemic levels, but patterns have shifted

Transportation Demand Management

- Encourage transit
- Better distribute vehicular volumes and density



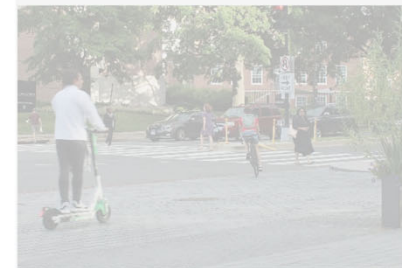
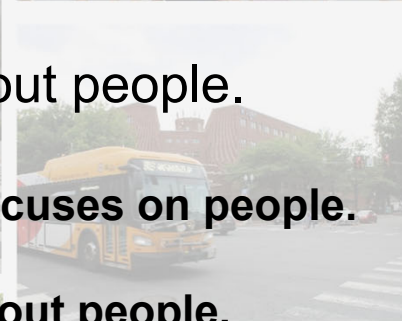
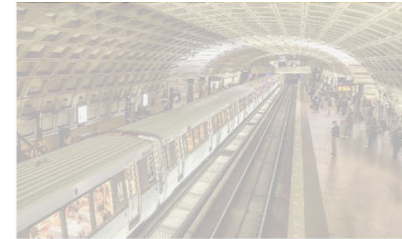
Wrap Up

Return to Office Commuting Patterns

- New, slow return to the office
- Significant increase in Telework
- Significant drop in Transit Ridership
- Vehicular volumes reaching pre-pandemic levels, but patterns have shifted

Transportation Demand Management

- Better for the environment
- Promotes well-being
- Reduces traffic congestion



It's all about people.

Gorove Slade focuses on people.

TDM is about people.

BWC celebrates people.

Questions?

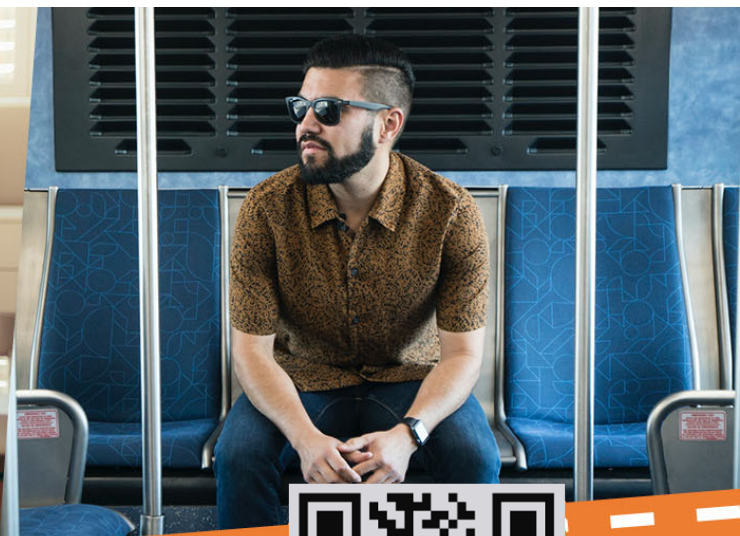
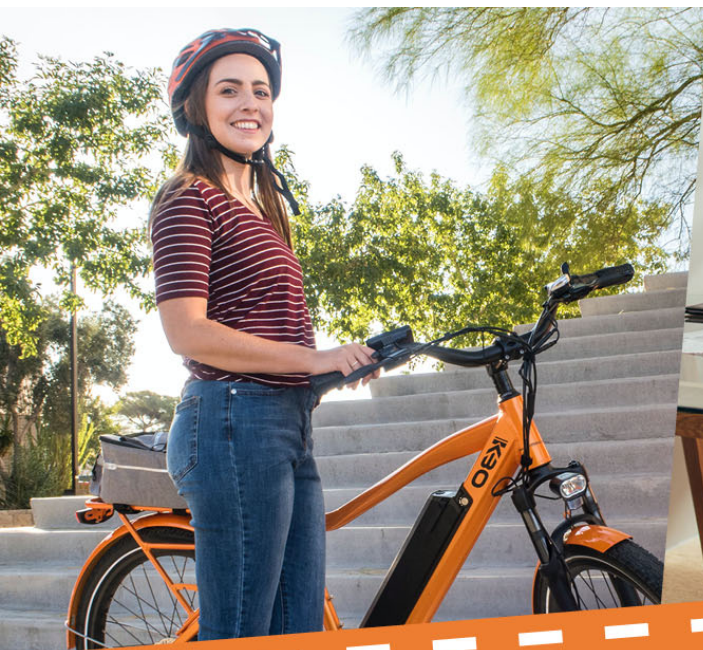


GOROVE SLADE
Transportation Planners and Engineers

Thank You!



GOROVE SLADE
Transportation Planners and Engineers



Thank you!

www.bestworkplaces.org/join

Questions?

Julie Bond
jmbond@usf.edu



Recognition for
WORKPLACES, UNIVERSITIES and SITES

bestworkplaces.org